

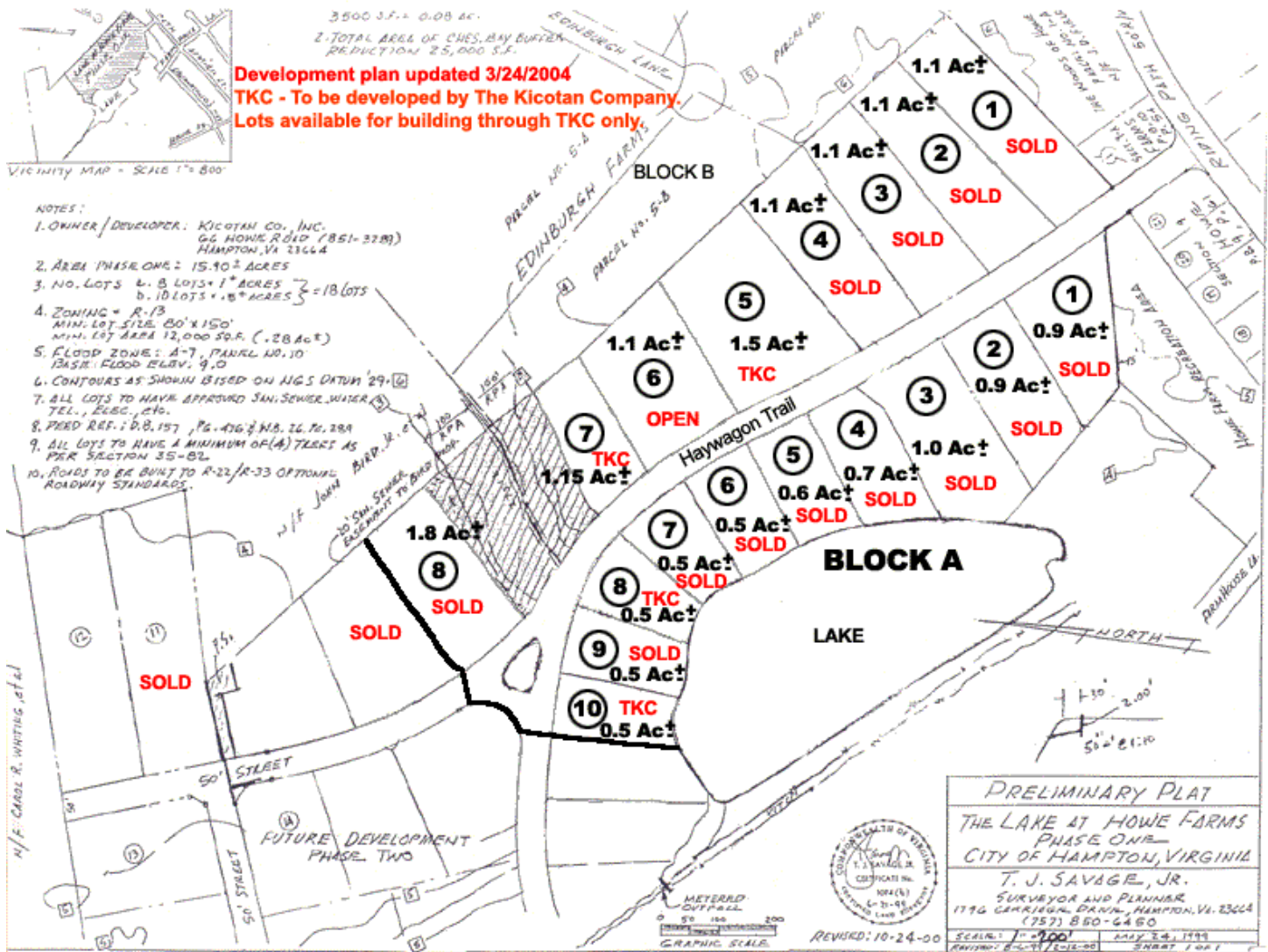
# The Lake At Howe Farms

*Peaceful Lakeside Living Away From The Hurry Of Nearby City Life*

The Lake At Howe Farms is The Kicotan Company's newest addition to the prestigious Hampton community of Howe Farms featuring gracious country and lakeside living away from the hurry of nearby city life.

The community is in its first phase of development with 0.5 acre to 1.8 acre lots currently available. The Lake At Howe Farms is close to Chesapeake Bay water access and the city's finest park – Gosnold Hope Park. The community is also convenient to downtown Hampton, Langley Air Force Base, and great schools, shopping and other amenities.

View the quality work of The Kicotan Company by visiting our website at <http://www.kicotan.com>. All Howe Farms communities participate in a mandatory homeowners association and incorporate architectural controls to ensure the integrity of these fine neighborhoods. Contact Tommy Thompson or Katherine Renn at 757-851-3289 for further information.

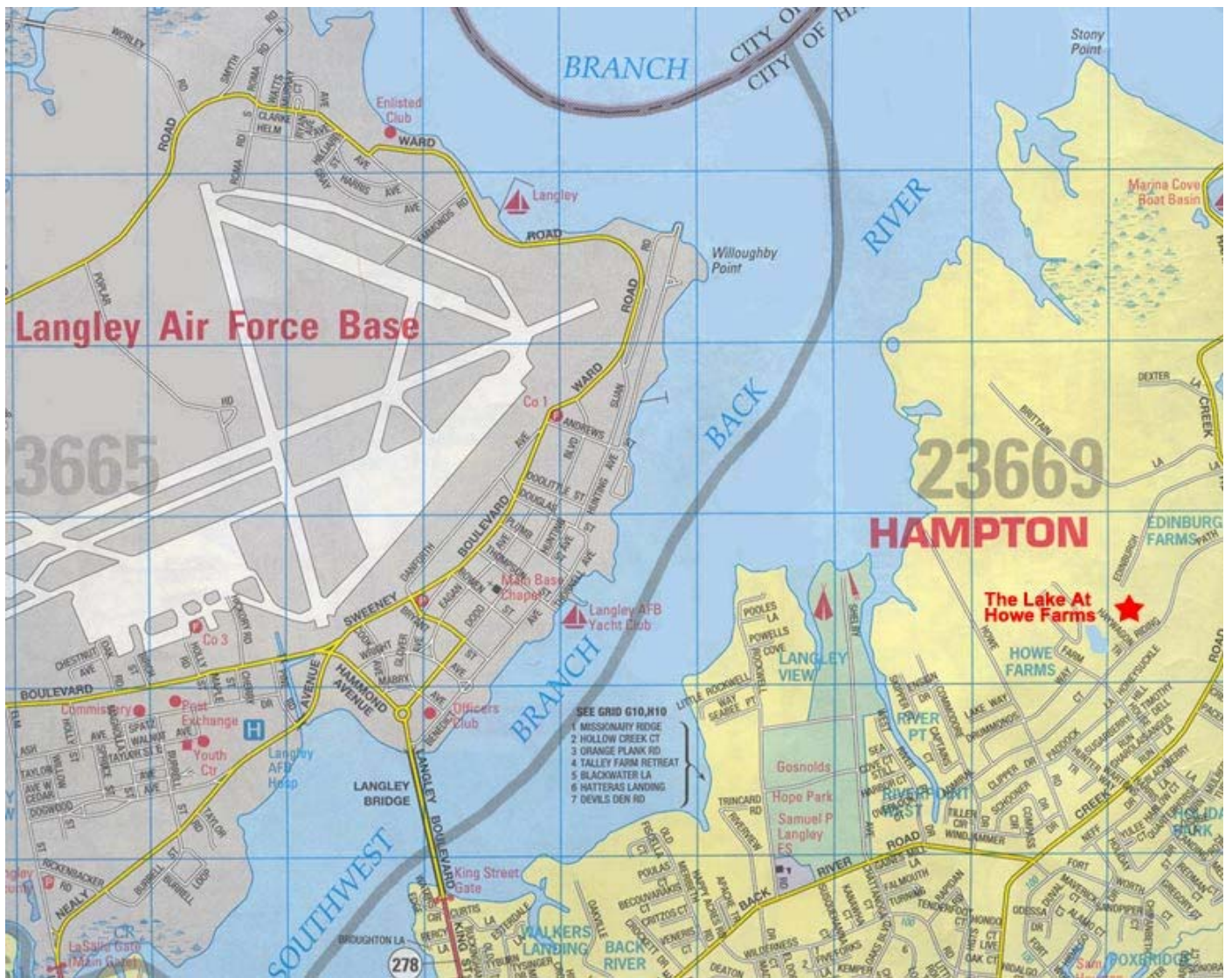


**LAKESIDE – PHASE I BLOCK A**

**ACROSS FROM LAKE – PHASE I – BLOCK B**

LOT#	BUILDER	STREET ADDRESS
1A	SOLD	3 Haywagon Trail
2A	SOLD	5 Haywagon Trail
3A	SOLD	7 Haywagon Trail
4A	KICOTAN CO.	9 Haywagon Trail
5A	SOLD - FRANCIS	11 Haywagon Trail
6A	SOLD - DEAVER	13 Haywagon Trail
7A	SOLD	15 Haywagon Trail
8A	KICOTAN CO.	17 Haywagon Trail
9A	SOLD	19 Haywagon Trail
10A	KICOTAN CO.	21 Haywagon Trail

LOT#	BUILDER	STREET ADDRESS
1B	SOLD - DAVIS	2 Haywagon Trail
2B	SOLD - CHAD	4 Haywagon Trail
3B	SOLD - BAKER	6 Haywagon Trail
4B	SOLD - MYERS	8 Haywagon Trail
5B	KICOTAN CO.	10 Haywagon Trail
<b>6B</b>	SOLD	12 Haywagon Trail
7B	KICOTAN CO.	14 Haywagon Trail
8B	SOLD	16 Haywagon Trail



The Kicotan Co., Inc.  
66 Howe Road, Hampton, VA 23669

757-851-3289  
info@kicotan.com/www.kicotan.com